



האוניברסיטה  
העברית  
בירושלים  
THE HEBREW  
UNIVERSITY  
OF JERUSALEM



The Hebrew University of Jerusalem

# International Degree Programs

A stylized, low-poly portrait of Albert Einstein, rendered in shades of teal and green. The portrait is composed of many small, irregular polygons, giving it a mosaic-like appearance. Einstein's iconic wild hair and mustache are clearly visible. The background of the entire page is a solid teal color, with some darker green geometric shapes in the corners.

# Hebrew University at a Glance

At Hebrew University, ranked among the world's leading universities, students of all backgrounds receive a university education where excellence is emphasized; where advanced, postgraduate study and research are encouraged; and where special programs and conferences attract students and academics from around the world. At its core, Hebrew University's mission seeks to develop cutting-edge research, educate future leaders from all walks of life, and nurture future generations of outstanding scientists and scholars in all fields of learning.

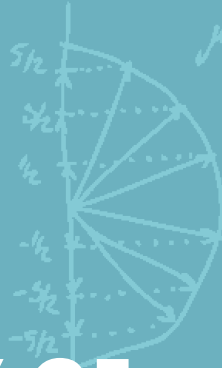
Faculty of Science	4
Faculty of Social Sciences	8
Paul Baerwald School of Social Work & Welfare	11
Faculty of Humanities	13
Faculty of Medicine	17
School of Business Administration	20
The Robert H. Smith Faculty of Agriculture, Food and Environment	22
Faculty of Law	26

# FACULTY OF SCIENCE

$$H\left(\frac{r^2}{2}\right) = \frac{MR^2}{2}$$

$$F = -\nabla U(\vec{r})$$
$$\vec{f}_{\text{Lorentz}} \propto \vec{B}(\vec{r})$$

$$F_z = \mu_{Bz} \frac{dB_z}{dz}$$



$B = \text{konst.}$

$^1_1\text{H}$  - Hydrogenium

$^2_1\text{H}$  - Deuterium

$^3_1\text{H}$  - Tritium

gamma  
momentum  
momentum

$$U_{\text{el}}(r) = \frac{e^2}{4\pi\epsilon_0} \frac{1}{r}, r \geq a_0$$



$$^{16}_8\text{O} + ^1_1\text{p} \rightarrow ^{17}_9\text{F} + \gamma$$

# PHYSICS

MSc | 2-Years

PhD

## THE RACAH INSTITUTE OF PHYSICS

Further develop your knowledge and skills in physics to prepare for a professional career or continuing studies. As a student, you'll master a subfield of physics and carry out research at the highest level, advancing the state of the art in each subfields. Our students take their rightful place among scientific leaders in both academia and industry.



[phys.huji.ac.il](https://phys.huji.ac.il)



[nataliash@savion.huji.ac.il](mailto:nataliash@savion.huji.ac.il)

---

# CHEMISTRY

MSc | 2-Years

PhD

## INSTITUTE OF CHEMISTRY

Graduate students in chemistry conduct research in a chosen field through a novel research project supervised by a faculty member from the Institute of Chemistry. Research sectors available to students include chemical industries, high-tech, healthcare, educational institutions or public services.



[chemistry.huji.ac.il](https://chemistry.huji.ac.il)



[ilonag@savion.huji.ac.il](mailto:ilonag@savion.huji.ac.il)

# LIFE SCIENCE

MSc | 2-Years

PhD

THE ALEXANDER SILBERMAN INSTITUTE OF LIFE SCIENCE

As a student of life sciences, you'll participate in innovative and groundbreaking scientific research within the discipline's varied fields. Graduate studies take place in the research track, which requires an advisor and submission of a thesis.



[bio.huji.ac.il/en](https://bio.huji.ac.il/en)



[kerend@savion.huji.ac.il](mailto:kerend@savion.huji.ac.il)

# BRAIN SCIENCE

Direct PhD | 5-Years

EDMOND & LILY SAFRA CENTER FOR BRAIN SCIENCES

As a student of brain science, you'll use computation and information processing to learn the theoretical and experimental tools that will allow you to employ a broad range of approaches. This knowledge will advance understanding of the nervous system's wide and efficient variety of functions, including perception and action, learning and memory, thought and creativity.



[elsc.huji.ac.il/education](https://elsc.huji.ac.il/education)



[nili.vershov@elsc.huji.ac.il](mailto:nili.vershov@elsc.huji.ac.il)

# BIOENGINEERING

Direct PhD | 5-Years

RACHEL & SELIM BENIN SCHOOL OF COMPUTER SCIENCE & ENGINEERING

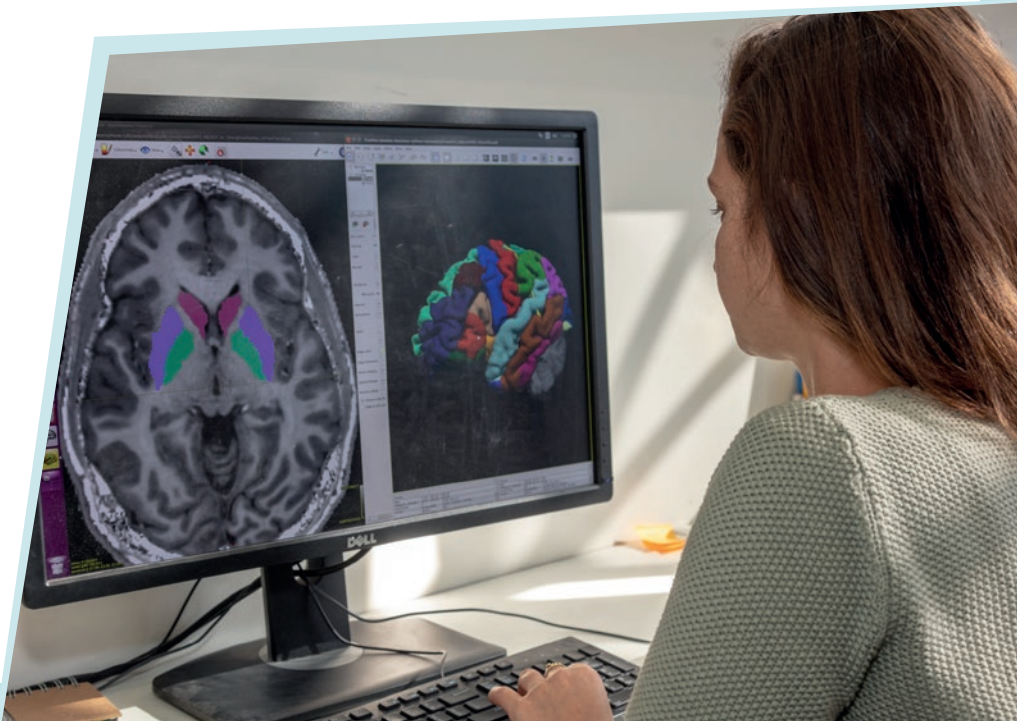
The computer science department's doctoral program offers a unique set of courses and laboratory experiences in this growing field. Projects range from the mapping of transcriptional networks and innovative human-on-a-chip devices to developmental biology and micro-environmental control of bacterial populations.



[cbsh.cs.huji.ac.il](http://cbsh.cs.huji.ac.il)



[hagity@savion.huji.ac.il](mailto:hagity@savion.huji.ac.il)





# FACULTY OF SOCIAL SCIENCES

## CONFLICT RESEARCH, MANAGEMENT AND RESOLUTION

MA | 1-Year

Explore the fields of conflict transformation, resolution, problem-solving, and negotiation. Study the methods, techniques, and strategies from a range of disciplines including political science, international relations, social psychology, international law, communication, digital media, sociology, and Israel studies.



[crmr-en.huji.ac.il](http://crmr-en.huji.ac.il)



[crmr@savion.huji.ac.il](mailto:crmr@savion.huji.ac.il)



# CONTEMPORARY GERMANY: POLITICS, SOCIETY AND CULTURE

MA | 2-Years

Study contemporary Germany and the role of politics, economics, technology, and culture in shaping German society. Locate contemporary German affairs within the context of European and global processes and explore Germany's role in the EU and European integration. Focus on challenges following the reunification of 1989, German-style multiculturalism, and Germany's industry and economy.



[ef.huji.ac.il/Contemporary-Germany](https://ef.huji.ac.il/Contemporary-Germany)



[msgsr@savion.huji.ac.il](mailto:msgsr@savion.huji.ac.il)



# ISRAEL STUDIES

MA | 1-Year

ROTHBERG INTERNATIONAL SCHOOL

Take a comprehensive, interdisciplinary approach to the study of Israel, including its history, politics, anthropology, culture, and religions. Gain cutting-edge academic knowledge about Israel's political system, sociological complexity, internal dynamics, and geopolitical role.



[overseas.huji.ac.il/israel-studies/](https://overseas.huji.ac.il/israel-studies/)



[gradmiss@savion.huji.ac.il](mailto:gradmiss@savion.huji.ac.il)

---

# GLOCAL INTERNATIONAL DEVELOPMENT STUDIES

MA | 18-Month

Glocal aims to provide students with academic knowledge relevant to international development, with particular focus on community development. Beyond academics, students gain skills, tools, and experience relevant to working with disadvantaged communities. An integral part of the program is a four-month internship with leading organizations that work with developing communities around the world.



[glocal.huji.ac.il](https://glocal.huji.ac.il)



[glocal@savion.huji.ac.il](mailto:glocal@savion.huji.ac.il)



PAUL BAERWALD

# **SCHOOL OF SOCIAL WORK & WELFARE**

---

# NONPROFIT MANAGEMENT & LEADERSHIP

MA | 1-Year

ROTHBERG INTERNATIONAL SCHOOL

Develop the skills necessary to become a leader in the nonprofit world. You'll study social change in theory and practice while focusing on civil society and social innovation. Gain hands-on experience while applying your knowledge in a hands-on internship at a nonprofit organization.



[overseas.huji.ac.il/nml](https://overseas.huji.ac.il/nml)



[gradmiss@savion.huji.ac.il](mailto:gradmiss@savion.huji.ac.il)



The background is a teal-colored graphic featuring large, overlapping geometric shapes. A semi-transparent image of an open book is visible, showing its pages and spine. The text 'FACULTY OF HUMANITIES' is centered in the upper half of the image.

# **FACULTY OF HUMANITIES**

# JEWISH EDUCATION

PhD

THE SEYMOUR FOX SCHOOL OF EDUCATION

This doctoral program is for educators in formal and informal frameworks who are interested in exploring questions of culture and identity in educational programs. Courses in Jewish Education address the various facets of the goals, methods, and challenges involved in transmitting Jewish culture and teaching Jewish subjects in Israel and the Diaspora.



[melton.huji.ac.il/phd-jewish-education](https://melton.huji.ac.il/phd-jewish-education)



[etige@savion.huji.ac.il](mailto:etige@savion.huji.ac.il)

## BLENDED LEARNING PROGRAM SPECIALIZING IN JEWISH EDUCATION

MA | 1-Year

THE SEYMOUR FOX SCHOOL OF EDUCATION

Earn a Master's degree in Education with a specialization in Jewish education through this one-year degree program, offered to Jewish and non-Jewish educators around the world. The program combines on-site and distance learning through the Melton Centre for Jewish Education.



[masterjewishprogram.huji.ac.il](https://masterjewishprogram.huji.ac.il)



[liel.zahavi@mail.huji.ac.il](mailto:liel.zahavi@mail.huji.ac.il)



# ISLAMIC AND MIDDLE EASTERN STUDIES

MA | 1-Year

ROTHBERG INTERNATIONAL SCHOOL

Deepen your knowledge of this dynamic region, while gaining insight into the different aspects of the Middle East: society, politics, history, religion, language, and culture. Emphasis is placed on the modern history of the region and the study of Literary Arabic.

 [overseas.huji.ac.il/islamic-middle-eastern-studies/](https://overseas.huji.ac.il/islamic-middle-eastern-studies/)

 [gradmiss@savion.huji.ac.il](mailto:gradmiss@savion.huji.ac.il)

---

# BIBLE AND THE ANCIENT NEAR EAST

MA | 2-Years

ROTHBERG INTERNATIONAL SCHOOL

Delve into the literature, history, cultures, and languages of the Ancient Near East through critical examination of Biblical texts, intensive study of Biblical Hebrew and Akkadian, and Biblical archaeology courses and study tours. You may also choose to study Modern Hebrew through the advanced level. The program is geared towards students with a background in the field who wish to pursue further academic studies.

 [overseas.huji.ac.il/bible-ancient-near-east/](https://overseas.huji.ac.il/bible-ancient-near-east/)

 [gradmiss@savion.huji.ac.il](mailto:gradmiss@savion.huji.ac.il)

# JEWISH STUDIES

MA | 2-Years

ROTHBERG INTERNATIONAL SCHOOL

Expand your critical thinking, textual analysis, and writing skills while gaining an in-depth understanding of Jewish history, culture, and civilization from ancient times to the present. Take advantage of the opportunity to study Modern Hebrew intensively and experience Jerusalem as your second classroom.

 [overseas.huji.ac.il/jewish-studies/](https://overseas.huji.ac.il/jewish-studies/)  [gradmiss@savion.huji.ac.il](mailto:gradmiss@savion.huji.ac.il)





# FACULTY OF MEDICINE

## BIO-MEDICAL SCIENCES

FACULTY OF DENTAL MEDICINE

MSc | 2-Years

PhD

Research topics in the field of bio-medicine, such as stem cells, bone, biofilm, cell movement, epigenomics, and more. The department's research addresses the human organs and disorders while covering basic, applied, and clinically-oriented research.



[biomedical-israel.com](http://biomedical-israel.com)



[yehudithr@savion.huji.ac.il](mailto:yehudithr@savion.huji.ac.il)

# BIO-MEDICAL SCIENCES

MSc | 2-Years

PhD

FACULTY OF MEDICINE

Graduate students in the bio-medical sciences (MSc) study a wide range of fields, combining coursework with research that emphasizes an understanding of the human body's systems in health and illness. Graduates of the program are at the forefront of bio-medical sciences in the State of Israel and go on to hold research and teaching positions in academic institutions, work in high-tech industries, and work in laboratories, hospitals, and health systems.



[bio-med-sciences.huji.ac.il](http://bio-med-sciences.huji.ac.il)



[laurabr@savion.huji.ac.il](mailto:laurabr@savion.huji.ac.il)

---

# PHARMACEUTICAL SCIENCES

MSc | 2-Years

PhD

SCHOOL OF PHARMACY

Enroll as a student in the School of Pharmacy and you'll join a leading research center for drug development. Our programs integrate the world of academia, the pharmaceutical industry, and chemical and bio-technical industries for a degree that educates the leading drug researchers of tomorrow.



[pharmacyen.huji.ac.il](http://pharmacyen.huji.ac.il)



[sagita@savion.huji.ac.il](mailto:sagita@savion.huji.ac.il)

# INTERNATIONAL MASTER OF PUBLIC HEALTH

MA | 1-Year

SCHOOL OF PUBLIC HEALTH

Study in the IMPH program for a scientifically stimulating academic program with peers from diverse professional and cultural backgrounds. The one-year, APHEA-accredited English-language program provides its trainees with the tools to examine public health challenges and formulate relevant responses at institutional, community, and national levels, all against the unique backdrop of Jerusalem.



[imph.huji.ac.il](http://imph.huji.ac.il)



[imph@ekmd.huji.ac.il](mailto:imph@ekmd.huji.ac.il)



The background features a diagonal split between a light yellow and a dark olive green. Overlaid on the green section is a faint, repeating pattern of financial data, including numbers and percentage changes with upward and downward arrows.

# **SCHOOL OF BUSINESS ADMINISTRATION**

---

# INTERNATIONAL STARTUP 360° MBA

MBA | 1-Year

This program provides future entrepreneurial leaders with the skills to succeed in the exciting, dynamic world of technology and innovation. After two internships at a startup and a VC, your studies will culminate in a six-week summer semester during which you will be guided by academic experts and professionals as you develop and present an idea to a panel of VCs and potentially gain funding to start your own venture.



[imba.huji.ac.il](http://imba.huji.ac.il)



[imba@savion.huji.ac.il](mailto:imba@savion.huji.ac.il)





THE ROBERT H. SMITH

# FACULTY OF AGRICULTURE, FOOD AND ENVIRONMENT

---

THE INTERNATIONAL SCHOOL OF  
AGRICULTURAL SCIENCES

## ANIMAL SCIENCES

MSc | 1-Year

The MSc in Animal Sciences prepares students to become leading professionals in the field of modern agriculture and contribute newly-acquired skills and knowledge for the benefit of agriculture in their home countries. In this program, based on the most recent scientific findings, students learn the fundamentals of animal sciences, animal physiology, farm animal production, and the environmental impact of agricultural activity.



[intschool.agri.huji.ac.il/msc/animalsci](https://intschool.agri.huji.ac.il/msc/animalsci)



[nuritbe@savion.huji.ac.il](mailto:nuritbe@savion.huji.ac.il)



# ENVIRONMENTAL QUALITY SCIENCES

MSc | 2-Years

This program prepares you to address the challenges of global environmental issues: development of alternative water and energy resources, water and soil pollution treatment, waste recycling, agricultural intensification, environmentally-sustainable pest control and plant protection, and related economics.



[intschool.agri.huji.ac.il/msc/environment](https://intschool.agri.huji.ac.il/msc/environment)



[nuritbe@savion.huji.ac.il](mailto:nuritbe@savion.huji.ac.il)



# NUTRITIONAL SCIENCES

MSc | 1-Year

Nutritional and food sciences are rapidly expanding areas of research, making major contributions to health promotion and new developments in the food industry. This program enables you to apply your newly acquired knowledge to nutritional challenges and work as a professional in your home country.



[intschool.agri.huji.ac.il/msc/nutrition](https://intschool.agri.huji.ac.il/msc/nutrition)



[nuritbe@savion.huji.ac.il](mailto:nuritbe@savion.huji.ac.il)

---

# PLANT SCIENCES

MSc | 1-Year

The plant science program, specializing in field and vegetable crops, prepares students to adapt their knowledge to local conditions in countries around the world. Employ advanced knowledge and skills in the scientific basis and principles of crop plant production, environmental impact of agricultural activity, and the analysis of specific cropping systems to seek practical solutions to problems, either through scientific literature or using an experimental approach.



[intschool.agri.huji.ac.il/msc/plant](https://intschool.agri.huji.ac.il/msc/plant)



[nuritbe@savion.huji.ac.il](mailto:nuritbe@savion.huji.ac.il)



# VITICULTURE AND ENOLOGY

MSc | 18-Month

Learn the finer points of fine wine in this program, composed of scientific theory, practice in grape-growing, wine-making and wine-tasting, and an internship with leading wine producers in Israel and overseas. Classes are held two days per week over four consecutive semesters, with practical work in vineyards throughout the duration of the program.



[intschool.agri.huji.ac.il/msc/viticulture](https://intschool.agri.huji.ac.il/msc/viticulture)



[helenadahab@savion.huji.ac.il](mailto:helenadahab@savion.huji.ac.il)



A large, stylized fingerprint graphic in a dark olive green color, set against a background of light green geometric shapes. The fingerprint is centered and occupies most of the frame.

# **FACULTY OF LAW**

# HUMAN RIGHTS AND INTERNATIONAL LAW

LLM | 1-Year

The LLM program is designed for students who have completed a law degree and are interested in careers in law, academia, and in the governmental and non-governmental sectors. Students learn from Israeli and international experts in the fields of human rights and international law.

 [overseas.huji.ac.il/llm-hr-il/](https://overseas.huji.ac.il/llm-hr-il/)  [shaniebe@savion.huji.ac.il](mailto:shaniebe@savion.huji.ac.il)

---

## LAW WITH SPECIALIZATION IN HUMAN RIGHTS AND TRANSITIONAL JUSTICE

MA | 1-Year

This MA program combines high-level academic education with on-the-ground practice in the field of transitional justice and human rights, using the Middle East conflict as a reference point. The program encourages students with backgrounds in political science, international relations, and related fields to critically examine the norms of international law and their function to similar conflicts and resolutions.

 [en.law.huji.ac.il/mahr](https://en.law.huji.ac.il/mahr)  [shaniebe@savion.huji.ac.il](mailto:shaniebe@savion.huji.ac.il)



האוניברסיטה  
העברית  
בירושלים  
THE HEBREW  
UNIVERSITY  
OF JERUSALEM



Founded by  
Albert Einstein



8 Nobel Prizes, 2 Turing Prizes  
1 Fields Medal



Top 100  
Universities



Over 23,000 Students  
from 100+ Countries



Offering language study  
in over 30 languages



Unique  
Internships



[international.huji.ac.il](https://international.huji.ac.il)

 /HebrewU  /hebrewuniversity  /school/hebrew-university  /hebrewu